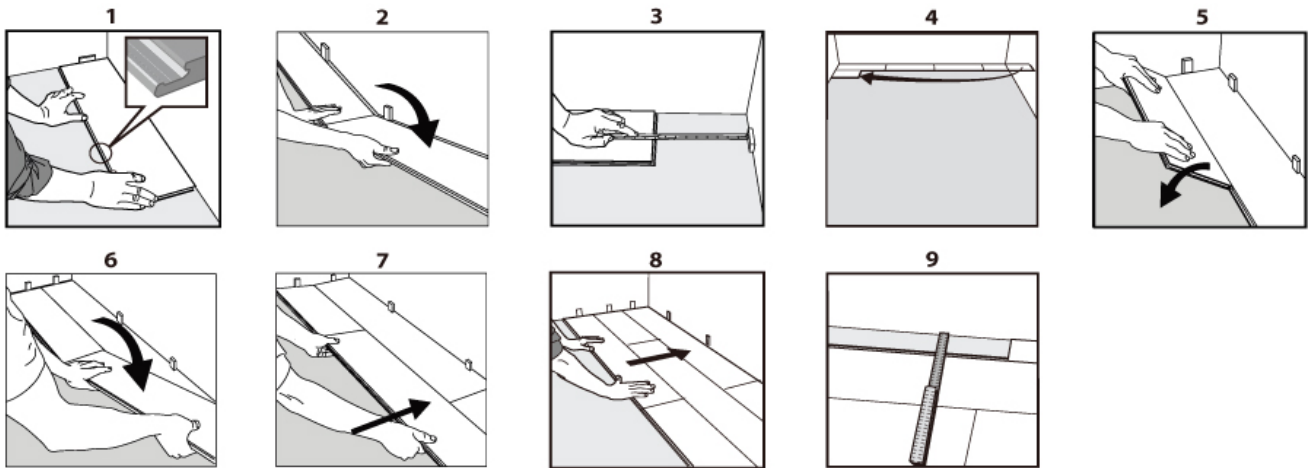


## Vinyl Click Installation Instructions (EN)



### Installation instructions for EZ Click™ Luxury Click Vinyl Flooring

#### 1. Before you start

##### 1.1 How to condition (acclimate) your floor?

Store your luxury Vinyl Planks in the room of installation for 48 hours prior to the installation. During this time, the planks should remain in the carton on a flat surface, and the room temperature should be maintained consistent between 68 and 77F (20 to 25 degr C).

##### 1.2 How to prepare your subfloor?

Make sure that your subfloor is smooth, flat, dry, clean and solid:

- Carpet staples or adhesive residue should be removed prior to installation.
- Subfloors should be flat within a tolerance of 3/16" (4.7mm) over a span of 10 feet. Any unevenness over 3/16" (4.7mm) must be sanded down or leveled with a floor leveler. Voids or humps in the subfloor will prevent the planks from locking properly.
- Although these luxury vinyl planks are water proof, they are not to be used as a moisture barrier. Your subfloor should be completely dry prior to installation of the vinyl floor. New concrete subfloors need to cure for a minimum of 60 days.
- Ceramic tile should be made smooth by applying a cementitious overlay such as patching or leveling compound to smooth out grout joints.

**It is important during installation that the installer open and work from 2-3 cartons at a time, mixing planks from each carton.**

**Do not install your luxury vinyl tile over soft subfloors such as carpet.**

### **Subfloors with radiant heat**

IMPORTANT: Below are instructions for approved installation of EZ Click Vinyl planks over radiant heating systems using water. Note that it is not recommended to install EZ CLICK Vinyl over any electrical radiant heating systems due to the speed of temperature changes which can negatively affect the flooring. Installation over electrical radiant heating systems will not be covered by the manufacturer's warranty.

1. Ensure the radiant heat surface temperature never exceeds 81°F (27°C). Before installing over newly constructed radiant heat systems, operate the system at maximum capacity to force any residual moisture from the cementitious topping of the radiant heat system. Then set the thermostat to a comfortable room temperature for the installation. It is recommended that the radiant heat be applied in a gradual manner after installing the vinyl flooring. Refer to the radiant heat system's manufacturer recommendations for additional guidance.

## 2. Installation method of floor panels

1. Begin laying in the left-hand corner. Place the floorboard .25" (6mm) from the left wall. Use spacers between the wall and the floorboard.
2. Insert the end section of the next floorboard at an angle to the first one, then lay down. Complete the first row in the same manner.
3. Place the final floorboard face down and the short side without the locking strip towards the wall. The distance to the wall should be .25" (6mm). Mark where the floorboard is to be cut.
4. Start the second row with the leftover cut part of the last plank of the previous row. This small plank should measure at least 12". Otherwise, use another plank that should be cut by two.
5. Place the floorboard at an angle against the floorboard in the previous row, press forward and fold down at the same time.
6. Place the short end of the floorboard at an angle against the previous installed floorboard and fold down. Ensure that the board is positioned in the integral locking strip of the floorboard in the previous row.
7. Lift both the current as well as the previous plank from this row, push to slide the current plank against the row in front so it aligns with the previous plank. The current and previous plank can now be folded completely down to horizontal position.
8. After 2-3 rows: adjust the distance to the front wall by placing spacers of .25" (6mm). Keep the spacers in position during the entire time of installation and remove once the installation is completed.

9. If the wall is uneven, the floorboards must be adapted to its contours. Mark the floorboards with the contour of the wall. Do not forget to leave .25" (6mm) of gap from the wall. This procedure shall be used also for the first row if necessary.

### 3. Care and maintenance

- Sweep or vacuum daily using soft bristle attachments.
- Clean up spills and excessive liquids immediately.
- Damp mop as needed and use cleaners recommended for no-wax vinyl floors.
- Protect floor from constant direct sunlight.
- Use proper floor protection devices such as felt protectors under furniture.
- Make sure pets have nails clipped regularly.
- Do not use abrasive cleaners, bleach or wax to maintain the floor.
- Do not drag or slide heavy objects across the floor.